



MAX PLANCK INSTITUTE FOR MARINE MICROBIOLOGY



WELCOME AND INFORMATION
FOR VISITORS



MAX PLANCK INSTITUTE FOR
MARINE MICROBIOLOGY

A GUIDELINE FOR VISITORS

Contents

- 1 **A Brief History of the Institute**
- 3 **First Week at the MPI**
- 4 **Life at the Institute**
- 5 **How to...**
- 7 **Telephone, E-Mail, Transportation & Holidays**
- 11 **Bremen - A Historical Place**
- 13 **Cultural Life**
- 15 **Drinks, Food and Nightlife**
- 17 **Imprint**

A Few Words of Welcome

Welcome to the Max Planck Institute for Marine Microbiology. You are joining an institution that is dedicated to study the smallest organisms in nature, their function and the interaction with their environment. We would also like to offer you a place with an enjoyable and communicative working atmosphere where you can find the people and facilities that make your visit a success.

This brochure is meant as a guidepost to your first steps in Bremen. It summarizes important information about the institute and the city of Bremen, information that you may need during the first days or weeks upon arrival. If you have any further questions please contact the administrative team or your colleagues.

We wish you an enjoyable and productive stay.

Sincerely,

(Managing Director)



Prof. Dr. Friedrich Widdel



Prof. Dr. Rudolf Amann



Prof. Dr. Marcel Kuypers

A Brief History of the Institute

- 1992** The Max Planck Institute for Marine Microbiology (MPIMM) is officially founded in Bremen and hosted by the Bremer Innovations- und Technologiezentrum (BITZ). The founding directors, **Prof. Dr. Bo Barker Jørgensen** and **Prof. Dr. Friedrich Widdel** become head of the Biogeochemistry Department and of the Microbiology Department, respectively.
- 1996** Opening of the new institute building close to the university campus. The building has 4,093 m² of floor space.
- 1997** Appointment of **Prof. Dr. Rudolf Amann** as leader of the Molecular Ecology Max Planck Research Group.
- 1999** Appointment of **Dr. Dirk de Beer** as head of the permanent Microsensor Research Group within the Biogeochemistry Department.
- 2001** New Molecular Ecology Department headed by **Prof. Dr. Amann** as third MPI director.
- 2002** Establishment of the **International Max Planck Research School for Marine Microbiology (MarMic)**.
- 2003** Appointment of **Prof. Dr. Antje Boetius** as head of the Microbial Habitat Research Group within the Biogeochemistry Department.
- 2004** Appointment of **Prof. Dr. Frank Oliver Glöckner** as head of the Microbial Genomics Research Group within the Molecular Ecology Department.
- 2005** Appointment of **Prof. Dr. Marcel Kuypers** as leader of the new Max Planck Research Group Nutrients.
- 2007** Appointment of **Prof. Dr. Nicole Dubilier** as leader of the Minerva Symbiosis Research Group within the Molecular Ecology Department .
Opening of the **Center for Geomicrobiology** at Aarhus University (DK) by **Prof. Dr. Jørgensen**.

- 2008** Appointment of **Dr. Thorsten Dittmar** as leader of the Max Planck Research Group for Marine Geochemistry in cooperation with the ICBM at the University of Oldenburg.

Prof. Dr. Boetius sets up the HGF MPG Research Group for Deep Sea Ecology and Technology at the MPI in cooperation with the Alfred Wegener Institute of the Helmholtz Association of German Research Centres in Bremerhaven (AWI).

- 2009** Appointment of **Prof. Dr. Ir. Marc Strous** as leader of the Max Planck Research Group for Microbial Fitness at the MPI in cooperation with the University of Bielefeld.

Appointment of **Prof. Dr. Marcel Kuypers** as Director of the Department of Biogeochemistry at the MPI.
Opening of an extension providing an additional 1,062 m² of floor space. The building offers an effective area of almost 6000 m².

- 2011** Appointment of **Dr. Katharina Pahnke** as leader of the Max Planck Research Group for Marine Isotope Geochemistry in cooperation with the Institute for Chemistry and Biology of the Marine Environment (ICBM) at the University of Oldenburg.

Prof. Dr. Jørgensen retires as director and transfers the directorship to **Prof. Dr. Kuypers**.

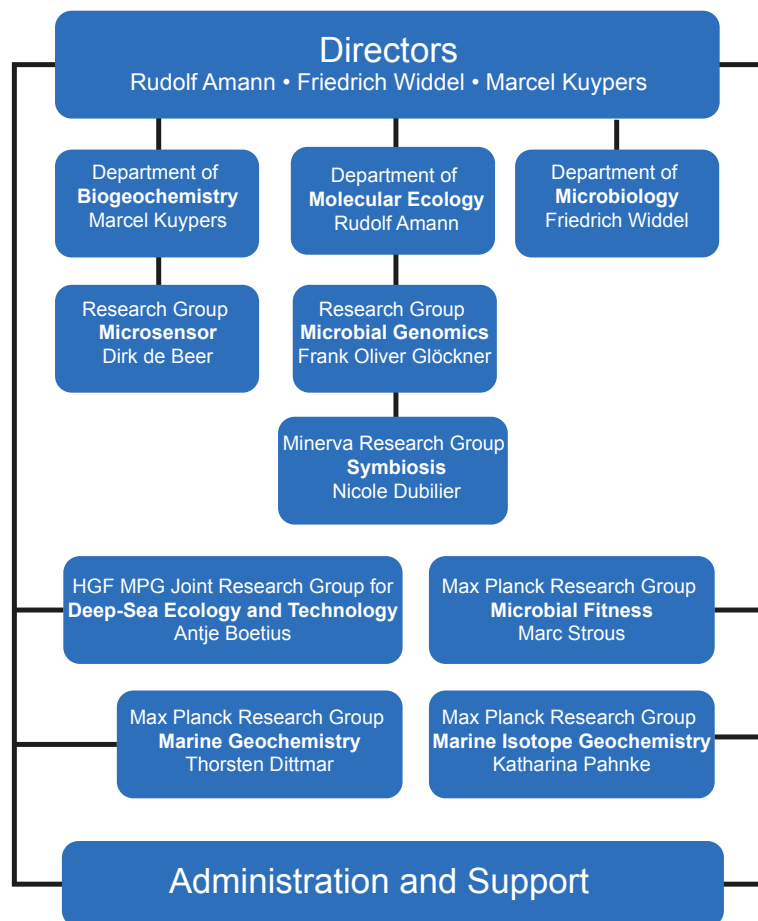


The foyer of the institute is a bright, friendly place

First Week at the MPI

On your first day at the Max Planck Institute for Marine Microbiology please contact the institute's administration office (room 3151 on the third floor). They will inform you which documents to bring. If you are an employee they will also arrange an office key and a transponder for the automatic entrance doors. These two items can be picked up at the front desk usually within one day. If you have a guest status please contact your host scientist for key and transponder.

You also need to apply for a user identification at the IT department to use the institute's network and to obtain an e-mail address. The application has to be signed by the institute's administration and to be returned to the IT department.



If you are employed at the institute, the institute's administration office will help you with any queries you may have about your work contract. They will also inform you about documents they might need from you. German law requires you to prove that you have health insurance and to provide a tax card.

If you are German and stay for longer than three months, please register at the registration office in Bremen ("Stadtamt"). If you are a foreigner and stay longer than three months or are employed by the MPI, please register at the foreigner's registration office in Bremen ("Ausländerbehörde").

All registration issues can be settled at the registration office at the University of Bremen campus.

www.bsu.uni-bremen.de

Alternatively, there is a registration office in the pedestrian zone in the city center.

www.stadtamt.bremen.de/sixcms/detail

In case you need assistance with registration affairs feel free to request assistance from our staff member Anita Tingberg (ext. 523).

Life at the Institute

Language courses

The MPI offers language courses both in German and in English to their employees. Courses take place weekly in the afternoon in the premises of the institute. They are free of charge for employees. For the schedule please check our internal webpage.

www.mpi-bremen.de/Sprachkurse_Language_classes.html

Seminars

Each thursday at 3 p.m. there is a scientific presentation of one of the scientists or PhD students from the institute or from an external invitee. The lecturers and topics are announced per e-mail and by postings on the glass doors on each corridor. The seminars take place at the lecture hall of the MPI (room 4012).

Staff meetings

Staff meetings take place at irregular intervals. The directors, the administration, the employee organisation, and the IT department provide up-to-date information concerning organisational and/or administrative issues of importance to the employees. New staff members and guests have the chance to introduce themselves briefly.

How to...

... get a health insurance

A health insurance is compulsory for employees and students in Germany. The following documents are needed: proof of residence (that you got from the registration office), residence/work permit, contact details of employer or contract of employment, enrolment proof to get student fares (up to 30 years of age), identification or passport. If available you should also bring a proof of insurance of your former insurance company in your home country. Several insurance companies have offices at the university campus (glass entrance hall, opposite of the tram stop "Universität Zentralbereich"):

Hkk
Techniker Krankenkasse
AOK
Debeka

www.uni-bremen.de/en/service/daily-needs/insurance-offices.html

... open a bank account

To open a bank account in Germany (Girokonto) you need to bring an identification document or passport and a residence/work permit. It is advisable to make an appointment at the bank of your choice for the opening of your account. You will receive your account number and online banking documents right away. The bank card will be mailed to you separately usually within few days. For students up to 30 years the account is for free if an enrolment proof is provided upon application. Banks that offer many cash terminals throughout the city are:

Sparkasse Bremen
www.sparkasse-bremen.de

Postbank Bremen
www.postbank.de

... rent an apartment

Apartments and rooms in shared apartments are best found in the internet. A good source are the virtual bill-boards (German only):
www.schwarzesbrett.bremen.de

Here you can find offers by private persons for apartments or rooms in shared apartments without paying a commission. Here you can also post a search yourself. Alternatively you can contact housing companies that maintain apartments throughout the city area of Bremen. These are also usually free of commission.
www.bremische-bbg.de
www.gewoba.de
www.brebau.de
www.espabau.de

You can also rent an apartment from an agent. Be aware that they charge a certain percentage of the monthly rent as commission. The commission will not be refunded. Apartments mostly let by agents can be found here:
www.immobilienscout24.de/wohnen/bremen.html

In any case you will need to pay a deposit to your landlord which is commonly about two or three monthly rents. Make sure that you make a precise handover protocol of possible defects in the rented rooms.

... find daycare and schools

Municipal kindergarden and daycare facilities

www.kita-bremen.de

Das Entdeckerhaus Robert-Hooke-Straße 21 0421-20 30 324
www.kita-tp.de Day care center of Technologiepark e.V.
close to the institute.

International School Bremen Badgasteiner Straße 11
0421-515 779 0 www.isbremen.de Private, english-speaking school.

Telephone, E-Mail, Transportation & Holidays

Phone numbers in case of emergency

Police 0-110
Fire Brigade & Ambulance 0-112

Please note: when calling from an institute extension you must always dial "zero" to get an outside line before dialling the emergency number! The emergency numbers from outside the institute are 110 for the police and 112 for the fire brigade and ambulance.

Other important phone numbers:

Institute/laboratory safety: Dr. Manfred Schlösser, ext. 704
Building services: ext. 520 and 528. Technical emergency (after 4.15 pm): 0-0175 43 32 441

Private phone calls from the institute

You are allowed to make private calls from institute phones to numbers of the German landline network within a 50 km radius. For all other private calls from the institute phones please contact the administration office. They will provide you with a personal PIN code that you have to enter before any call. You will receive a bill listing all private phone calls every three months.

Phone calls made from the guest apartments' extension will be listed automatically. You do not need a PIN code, and will receive a bill listing all calls at the end of your stay.

If you need any assistance please dial ext. 517 for the institute's reception. They will help you or forward your call to the responsible person.

Mobile phone cards

Various mobile phone shops, supermarkets and drug stores in the city centre and around the town sell cards for mobile phones.

Telephone booths

There are several telephone booths in the city that can be operated with coins, phone cards or credit cards. Phone cards can be bought for €5 and €10 at Telecom shops, post offices, and some kiosks.

Internet and e-mail

The wireless internet connection can be used without a password in the whole institute, including the guest apartments.

Post offices

Private postcards or letters may be handed in to the institute's reception and paid at the reception desk. Parcels and other mail can be posted at the post offices (Deutsche Post). Nearby post offices:

Close to the institute:
H.-H.-Meier-Allee 40 28213 Bremen

Close to the central station:
Hermann-Böse-Straße 28195 Bremen

Close to the city centre:
Domsheide 15 28195 Bremen

Shopping

Groceries nearby the institute are Rewe and Penny supermarkets. Both are on H.-H.-Meyer-Allee (Tram 6, stop Wätjenstraße). Open from Mon-Sat 8 a.m.-10 p.m.

Biking

Bremen is a bike city with many well paved paths exclusively for bicycles. You can borrow a bike from the institute for a 20 € deposit. Alternatively, you can buy a second hand bike searching for "Fahrräder" at the internet portal www.schwarzesbrett.bremen.de.

Public transport



The Bremer Straßenbahn AG (BSAG) provides the public transport by bus or tram in Bremen. Tickets can be bought at the BSAG customer center (central station and city centre Domsheide), from a number of kiosks or directly in the bus or tram. www.bsag.de Please see page 18 for a public transportation map.

Taxi

There are taxi ranks all over the city (e.g. central station, airport).
Taxi companies: Taxi Ruf Bremen, 0-14014, Taxi Roland, 0-14433

Public holidays in Bremen

New Year's Day	January 1
Good Friday	
Easter Sunday	
Easter Monday	
Labour Day	May 1
Ascension Day	
Whit Sunday	
Whit Monday	
German Unification Day	October 3
Christmas Eve*	December 24
Christmas Day	December 25
Boxing Day	December 26
New Year's Eve*	December 31

* Christmas Eve and New Year's Eve are not official holidays in Germany. However, most companies and shops close at noon.

The institute is closed between Christmas Eve and New Year.



Cyclists waiting to pass a lift bridge on a sunny weekend

Tourist information

Tourist-Information Obernstraße/Liebfrauenkirchhof, close to the market place.

Tourist-Information Hauptbahnhof inside the central station.

Guided city tours in English

Bremen walks www.bremen-walks.com A team of young people guides you through the city they love.

Art.tours www.arttours-bremen.de

City guide magazines

Mix www.mix-online.de Available for free in many cafes, cinemas and theatres.

Bremer www.bremer.de Available at newspaper kiosks.



Rowing boats in the Bürgerpark, the park in the heart of Bremen

Bremen - A Historical Place

With a population of 548,000 and an area of 325.42 km², Bremen is the tenth largest city of Germany. Bremen is a city state. Together with the seaside town of Bremerhaven it is the smallest of



the 16 German federal states. Bremen and Bremerhaven lie at the banks of the River Weser which empties into the North Sea in Bremerhaven. The Weser is an important transportation route for both cities. Bremen was founded in the eighth century. In the 14th century Bremen became a member of the Hanseatic League, a highly influential economic and political alliance of some of the most

powerful trading cities in late medieval Europe. Today, Bremen is still referred to as a "Hansestadt", as are a number of other North German cities, including Hamburg, Lübeck and Rostock. Bremen's city centre has a rich history, and still has a lot of historical buildings and monuments, including the Statue of Roland, the Town Hall, and the statue of the famous Town Musicians of Bremen. In

2004, the 600-year-old Statue of Roland and the Town Hall were honoured with a place on UNESCO's World Heritage List. Opposite the Town Hall the Schütting, the prestigious home of the Chamber of Commerce and Industry is located. Bremen's overseas trade in cotton, tea and rice is traditionally represented by the Cotton Exchange, or "Baumwollbörse", at the south-east edge of the market square. A must see is the Schnoor Quarter in the southeastern city center with its narrow lanes and houses that partly date back to the fifteenth century. The quarter was originally inhabited by fishermen and shipbuilding traders and nowadays hosts



The Town Musicians of Bremen

cafes, galleries, and arts and crafts workshops. The Schlachte embankment is Bremen's completely redesigned Weser promenade with a lively and multi-faceted collection of pubs and restaurants. The maritime mile can seat more than 1,500 people under rustling leaves beside the Weser, and invites visitors to sit and relax for a while.

Bremen and its environs

Bremen is an ideal starting point for excursions to the nearby country. Just a few kilometres away from the institute you can find a charming scenery on the banks of the River Wümme. On sunny days, the dyke along the Wümme is full of cyclists and inline skaters, and local farmers offer homemade cake and jams. Several East Frisian Islands and the island Helgoland in the North Sea invite visitors to spend a relaxing weekend. Worth a visit is also the Wadden Sea National Park of Lower Saxony. The Wadden Sea is one of the largest intertidal coastal wetland in the world, and is home to a remarkable flora and fauna.

In 2009, the Dutch and German parts of the Wadden Sea were included in the UNESCO's World Heritage List.



Sunset at the Weser estuary

Research in Bremen

As a result of its outstanding range of research establishments and the intensive collaboration between the research and business communities, Bremen and Bremerhaven were the first cities to be awarded the title of "Stadt der Wissenschaft" (City of Science) in 2005. The marine research facilities in the city state of Bremen that comprise the Max Planck Institute for Marine Microbiology, the University of Bremen and its Center for Marine and Environmental Sciences (MARUM), the Jacobs University, the Leibniz Center for Tropical Marine Ecology, and the Alfred Wegener Institute for Polar and Marine Research are among the best in Germany. Multiple cooperations among the institutes and centers provide an interdisciplinary, international and very successful working atmosphere. The universities and institutes also offer several study programmes and international research schools in the field of marine science.

Cultural Life

Bremen offers you a diverse cultural programme. Below you will find a selection of cinemas, theatres and museums, in and around Bremen's city centre

Cinemas

CinemaXX - Breitenweg 27 www.cinamaxx.de/Home

City 46 - Birkenstraße 1 www.city46.de

Arthouse cinema with many movies in original language.

Schauburg - Vor dem Steintor 114 www.bremerfilmkunsttheater.de Arthouse cinema.

Theatres (performances in German)

Theater am Goetheplatz - Am Goetheplatz 1-3

www.bremertheater.com/start/index.php

Shakespeare Company - Schulstraße 26

www.shakespeare-company.com

Music

Die Glocke - Domsheide 4-5 www.glocke.de

Concert hall for classical music, jazz, and special music events.

Art and museums

Kunsthalle Bremen - Am Wall 207 www.kunsthalle-bremen.de Art collection from painting and sculptures to media art, from 14th century art to contemporary art.

Focke Museum - Schwachhauser Heerstraße 240 www.focke-museum.de Exhibition about the urban and cultural history of Bremen and its environs.

Universum Science Center - Wiener Straße 1a www.universum-bremen.de

Self portrait of Paula Modersohn-Becker, a painter from Worpswede near Bremen



Kunsthalle Bremen - Der Kunstverein in Bremen

Popular annual open-air events in Bremen

(please see www for dates)

Bremer Karneval

www.bremer-karneval.de

Samba carnival with live music, fancy costumes and procession in February.

Breminale

www.breminale.de

Riverside open air musicfestival in June/July.

La Strada - www.strassenzirkus.de

Open air circus and artist festival in August.

Weihnachtsmarkt - www.bremer-weihnachtsmarkt.de and www.schlachte-zauber.de

Christmas markets in the Bremer city centre.



Carnival in Bremen attracts Samba bands from all over Europe

Municipal library

Stadtbibliothek Am Wall 201 www.stadtbibliothek-bremen.de/

A good choice of books, magazines and newspapers in English and several other languages.

Sports

Sportlounge Munte Zur Munte 23 /25 0421 / 20 24 44 www.sportlounge-munte.de A fitness center close to the institute.

Canoeing is a popular sport in Bremen and surroundings owing to the many and first-rate rivers and streams. Try it out and rent a canoe or kayak at of the canoe clubs nearby.

www.kanuscheune.de

www.bootsverleih-ramke-bremen.de

Wide skies at Tegeler Plate at the river Weser



Drinks, Food and Nightlife

Bremen offers a wide range of cafes, bars, restaurants and night-clubs. You can find most "in" locations in the Quarters Ostertor and Steintor, which the citizens of Bremen refer to as the "Viertel". An alternative destination is the "Schlachte" embankment. Here we present a selection of a few locations that are popular among the MPI staff.

Haus am Walde Kuhgrabenweg 2 www.hausamwalde-bremen.de
Beer garden and restaurant with a pleasant atmosphere. Close to the MPI.

Oliver's Restaurant Hochschulring 1 www.olivers-am-unisee.de
Restaurant, café and bar with a view over the "Unisee" lake. Ideal for a drink after work. Not far from the MPI.

Hof Kaemena Niederblockland 6
www.snuten-lekker.de

Organic dairy farm that produces a great selection of home-made organic ice cream. Just a few kilometres away from the MPI in the Untere Wümme nature reserve.

Port Piet Torfhafen www.portpiet.de

Summer garden with food and drinks. Special treats for canoeists. Only open in good weather. Findorff-Markt.

Rotkäppchen Am Dobben 97
Bistro restaurant with tasty food and great prices. Viertel.

Kulturzentrum Lagerhaus Schildstraße 12-19
www.kulturzentrum-lagerhaus.de
This welcoming café, bar and disco is a popular meeting place for students. Ideal for larger groups. Viertel.

Hegarty's Ostertorsteinweg 80 www.hegartys.de
Irish Pub with a quiz night every Monday. Shows live football matches. Viertel.



Harbour scene at sunset



Not only good for a break after a canoe trip: Port Piet on a sunny day

Bremer Ratskeller Am Markt www.ratskeller-bremen.de
Restaurant with a 600 year old tradition at the market place. Wine tasting and guided tours through the expansive wine cellars. City center.

Schüttinger Hinter dem Schütting 12-13 www.schuettinger.de
Traditional brewery close to the market place, offers traditional and solid food. City center.

Feuerwache Restaurant Waller Stieg 5
www.restaurant-feuerwache.de
Comfortable restaurant, café and bar. Best visited at sundown- the view of the timber docks is unique! Überseestadt.

Enchilada Schlachte 26 www.enchilada.de
Beer garden, cocktail bar and restaurant with the typical flair of the Schlachte embankment. Shows live football matches. Schlachte.

Imprint

Publisher: Max Planck Institute for Marine Microbiology
 Press and Public Relations Office
 Celsiusstr. 1 D-28359 Bremen

Telephone: +49 (0)421 2028 704 or 2028 856
 Fax: +49 (0)421 2028 790
 E-Mail: presse@mpi-bremen.de
 Internet: www.mpi-bremen.de
 Editors: Rita Dunker, Manfred Schlösser, Anja Kamp
 Photos: Max Planck Institute for Marine Microbiology,
 Manfred Schlösser (pages 9,10, lower 11, upper
 14,15,16), WFB Wirtschaftsförderung Bremen
 (page 11), Lutz Achilles (pages 12 and 14),
 Paula Modersohn-Becker: Selbstbildnis vor
 grünem Hintergrund und mit blauer Iris, Kunst-
 halle Bremen - Der Kunstverein in Bremen.
 Foto: Lars Lohrich (page 13), Marum Center
 for Marine Environmental Sciences (page 17)

Layout: Rita Dunker, Harald Wittig
 Print: Blablawer?



The flag of Werder Bremen - the soccer team of Bremen. Here, at 2000 m depth in the Black Sea.

