

Research article

## Utilization of tmRNA sequences for bacterial identification

Wilhelm Schönhuber<sup>1,4</sup>, Guenael Le Bourhis<sup>2,3</sup>, Josselyne Tremblay<sup>2</sup>, Rudolf Amann<sup>4</sup> and Saulius Kulakauskas\*<sup>2</sup>

Address: <sup>1</sup>Lehrstuhl für Mikrobielle Ökologie, Universität Konstanz, Fach M654, Universitätsstrasse 10, D-78457 Konstanz, Germany, <sup>2</sup>Unité de Recherches Laitières et de Génétique Appliquée, Institut National de la Recherche Agronomique, Domaine de Vilvert, 78352 Jouy-en-Josas, France, <sup>3</sup>Laboratoire de Pharmacologie des Agents Anticancéreux, Institut Bergonié, 229, Cours de l'Argonne, 33076 Bordeaux, France and <sup>4</sup>Max-Planck-Institut für Marine Mikrobiologie, Celsiusstrasse 1, D-28359 Bremen, Germany

E-mail: Wilhelm Schönhuber - Wilhelm.Schoenhuber@uni-konstanz.de; Guenael Le Bourhis - Lebourhis@bergonie.org; Josselyne Tremblay - Josselyne.Tremblay@jouy.inra.fr; Rudolf Amann - ramann@mpi-bremen.de; Saulius Kulakauskas\* - Saulius.Kulakauskas@diamant.jouy.inra.fr

\*Corresponding author

Published: 7 September 2001

Received: 21 May 2001

BMC Microbiology 2001, 1:20

Accepted: 7 September 2001

This article is available from: <http://www.biomedcentral.com/1471-2180/1/20>

© 2001 Schönhuber et al; licensee BioMed Central Ltd. Verbatim copying and redistribution of this article are permitted in any medium for any non-commercial purpose, provided this notice is preserved along with the article's original URL. For commercial use, contact [info@biomedcentral.com](mailto:info@biomedcentral.com)

### Abstract

**Background:** Ribosomal RNA molecules are widely used for phylogenetic and *in situ* identification of bacteria. Nevertheless, their use to distinguish microorganisms within a species is often restricted by the high degree of sequence conservation and limited probe accessibility to the target in fluorescence *in situ* hybridization (FISH). To overcome these limitations, we examined the use of tmRNA for *in situ* identification. In *E. coli*, this stable 363 nucleotides long RNA is encoded by the *ssrA* gene, which is involved in the degradation of truncated proteins.

**Results:** Conserved sequences at the 5'- and 3'-ends of tmRNA genes were used to design universal primers that could amplify the internal part of *ssrA* from Gram-positive bacteria having low G+C content, i.e. genera *Bacillus*, *Enterococcus*, *Lactococcus*, *Lactobacillus*, *Leuconostoc*, *Listeria*, *Streptococcus* and *Staphylococcus*. Sequence analysis of tmRNAs showed that this molecule can be used for phylogenetic assignment of bacteria. Compared to 16S rRNA, the tmRNA nucleotide sequences of some bacteria, for example *Listeria*, display considerable divergence between species. Using *E. coli* as an example, we have shown that bacteria can be specifically visualized by FISH with tmRNA targeted probes.

**Conclusions:** Features of tmRNA, including its presence in phylogenetically distant bacteria, conserved regions at gene extremities and a potential to serve as target for FISH, make this molecule a possible candidate for identification of bacteria.

### Background

In recent years, molecular approaches based on nucleotide sequences of ribosomal RNA (rRNA) have become widely used tools for identification of bacteria [1–4]. The high degree of evolutionary conservation makes 16S and 23S rRNA molecules very suitable for phylogenetic stud-

ies above the species level [3–5]. More than 16,000 sequences of 16S rRNA are presently available in public databases [4,6]. The 16S rRNA sequences are commonly used to design fluorescently labeled oligonucleotide probes. Fluorescence *in situ* hybridization (FISH) with these probes followed by observation with epifluores-

cence microscopy allows the identification of a specific microorganism in a mixture with other bacteria [2-4]. By shifting probe target sites from conservative to increasingly variable regions of rRNA, it is possible to adjust the probe specificity from kingdom to species level.

Nevertheless, 16S rRNA sequences of closely related strains, subspecies, or even of different species are often identical and therefore can not be used as differentiating markers [3]. Another restriction concerns the accessibility of target sites to the probe in FISH experiments. The presence of secondary structures, or protection of rRNA segments by ribosomal proteins in fixed cells can limit the choice of variable regions as *in situ* targets for oligonucleotide probes [7,8]. One way to overcome the limitations of *in situ* identification of bacteria is to use molecules other than rRNA for phylogenetic identification of bacteria, for which nucleotide sequences would be sufficiently divergent to design species specific probes, and which would be more accessible to oligonucleotide probes. For this purpose we investigated the possibility of using tmRNA (also known as 10Sa RNA; [9-11]). This molecule was discovered in *E. coli* and described as small stable RNA, present at ~1,000 copies per cell [9,11]. The high copy number is an important prerequisite for FISH, which works best with naturally amplified target molecules. In *E. coli*, tmRNA is encoded by the *ssrA* gene, is 363 nucleotides long and has properties of tRNA and mRNA [12,13]. tmRNA was shown to be involved in the degradation of truncated proteins: the tmRNA associates with ribosomes stalled on mRNAs lacking stop codons, finally resulting in the addition of a C-terminal peptide tag to the truncated protein. The peptide tag directs the abnormal protein to proteolysis [14,15]. 165 tmRNA sequences have so far (August 2001; The tmRNA Website: [http://www.indiana.edu/~tmrna/]) been determined [16,17]. The tmRNA is likely to be present in all bacteria and has also been found in algae chloroplasts, the cyanelle of *Cyanophora paradoxa* and the mitochondrion of the flagellate *Reclinomonas americana* [10,17,18].

In this study we present the first data on suitability of tmRNA for phylogenetic affiliation and *in situ* identification of bacteria.

## Results and discussion

### Analysis of *ssrA* sequences from the species *Lactococcus lactis*

*Lactococcus lactis* was chosen to investigate the variability of tmRNA within one species. We used oligonucleotides B1 and B2, designed according to conserved tmRNA regions of *B. subtilis* (Table 1; [13]) to PCR-amplify the internal part of the *ssrA* gene from *L. lactis* strain IL1403 (named by analogy with the *E. coli* tmRNA gene; [12]). The nucleotide sequence of the amplified fragment was determined using the same primers. In-

```
tactgacaga aaagttaaaa tatgctataa ttagacttca
agggttcaaag aattactgac agaataatca gtaggtatct
ccttaaattt GGGGGCGTTA CGGATTCGAC AGGCATTGTC 30
GCGCATGAAC TGCAACTGCT GAGGGATCAG GATAATCATC 70
CGCAGATAAA TATAACTGCT AAAAATAATA CACAAACTTA 110
CGCAATGGCA GCCTAAACAG CACCATGCGT GCCTGATTTT 150
TGCTCTCTGA TGGCAATTTG ACGGCCTAAA CTTTtagTCA 190
GATACGTTGT TGTGGAGGCT TGACGCAGCA AAAGAGATTT 230
AAAGCCCCGC AAAATGTCGC TGTTTGAGAC TGGCTTTGGC 270
ATTTTGTAA ATTTGAGAAA GTCCTATGGT TGtagACGTT 310
GATGTAGCAA GGTGTTTGGa CAGGGGTTcG ACTCCCCTCG 350
CCTCCAttga atggatttta tagaatccaa tagtattaga
aatcgctcaa tagagcgggt tttcttttct ctagtcogat
atgatacgat acaatctgat aaaagggagg gagaaaaaga
gggagaaaaa ataaaaaac cagtttatta
```

**Figure 1**

Nucleotide sequence of the *L. lactis* IL1403 chromosomal fragment encoding the *ssrA* gene. In capital letters, *ssrA* gene; in italics, presumed tag sequence, followed by a stop codon, the putative peptide is shown above the DNA sequence; in bold, variable positions 156, 208 and 235; underlined, regulatory regions (-10, -35 and terminator). Localization of primers 3L, 4L, 11L and 12L indicated by arrows.

verse PCR was used to obtain the sequence of the complete gene and of flanking regions [19]. For that purpose, chromosomal DNA of IL1403 was digested separately with restriction endonucleases *BclI*, *BglII*, *BspHI*, *HindIII*, *NsiI* or *SpeI*, respectively. The digested lactococcal DNA from each restriction reaction was ligated and PCR-amplified, using primers L3 and L4 (Fig. 1, Table 1). A PCR fragment of approximately 2,000 bp was obtained from *HindIII* digested and religated DNA. The fragment was sequenced using primers L3, L4, L11 and L12 (Table 1) to obtain the full sequence of *ssrA* and surrounding regions (Fig. 1). The limits of the lactococcal *ssrA* gene were determined after alignment of this sequence with that of the *B. subtilis* *ssrA* gene [13].

The lactococcal tmRNA gene is 356 bp long and surrounded by typical regulatory sequences, suggesting a monocistronic operon structure (Fig. 1). The terminal 3'-CCA triplet of tmRNA is not encoded by the gene, and may be added posttranscriptionally, as in the case of *B. subtilis* [13]. The conservative peptide tag sequence, which is between UAA triplets may be distinguished in the central part of the gene. This sequence allows to pre-

**Table 1: Oligonucleotides used in this work.**

Oligonucleotide	Sequence 5'-3'*	Target tmRNA
B1	ggggacgttacgattcgac, 1-20	<i>B. subtilis</i>
B2	tggagacgccggagtcgaa, 351-360	<i>B. subtilis</i>
L3	ttaaagccccgcaaatgtc, 229-248	<i>L. lactis</i> IL1403
L4	gtcaagcctccacaacaacg, 195-214	<i>L. lactis</i> IL1403
L11	acgattcgacagg, 10-23	<i>L. lactis</i> IL1403
L12	gggagtcgaacc, 234-246	<i>L. lactis</i> IL1403
E1	F-gtggaaatccagaatcagccc, 1-21	<i>E. coli</i>
E2	F-gcgtagttttcgtc, 96-109	<i>E. coli</i>
E3	F-ttgatccccgtcctaagagcgg, 154-175	<i>E. coli</i>
E4	F-tctcttttgggttgacctctc, 176-197	<i>E. coli</i>
E5	F-tggtggagctggcgggagtgaa, 341-363	<i>E. coli</i>
RNA1	HRP-tgggtttgacctctcttg, 173-190	<i>E. coli</i>

\* The type of label is either fluorescein (F-) or horseradish peroxidase (HRP-). Target sites are given after the sequences as nucleotide position numbers of the corresponding tmRNAs.

dict a 12 amino acid peptide (AKNNTQTYAMAA; see Fig. 1), which resembles the *ssrA*-encoded *E. coli* tmRNA tag sequence (ANDENYALAA; [14,15]). These similar features indicate that in Gram-positive bacteria, as in *E. coli*, the *ssrA* gene product may be involved in the turnover of truncated proteins.

To design universal primers for PCR amplification of tmRNA genes from different Gram-positive bacteria, we aligned tmRNA sequences of *L. lactis* and *B. subtilis*. The primers 11L and 12L corresponded to the conserved 5' and 3' ends of the tmRNA molecule, which are identical in *L. lactis* and *B. subtilis* (Fig. 1). These primers were used for PCR amplification and sequencing of internal segments of *ssrA* from different *L. lactis* strains. Alignment of tmRNA sequences of 16 *L. lactis* strains showed that there were three variable positions in the gene (156, 208 and 235, Fig. 1). These differences between *L. lactis* tmRNA sequences allowed us to distinguish 3 groups within the species, which corresponded to *L. lactis* ssp. *lactis*, *L. lactis* ssp. *lactis* biovar. *diacetylactis* and *L. lactis* ssp. *cremoris* (Table 1). Strain IL890 is an exception, since by *ssrA* sequence it belongs to the *L. lactis* ssp. *lactis* group, although it is classified as biovar. *diacetylactis*. IL2961 differs from the other *L. lactis* ssp. *lactis* strains by an T in the variable position 235 and a C in position 167 (Fig. 1). These differences of IL2961 are not surprising since this strain has an unusual RAPD pattern [20]. Even if the number of strains tested and the divergence of lactococcal tmRNA sequences are too low to make a significant clustering, these results show that biovariety *diacetylactis* may be distinguished by differences in chromosomal sequences not related to diacetyl production or to a citrate permease encoding plasmid, which is

in line with previous reports [21-23]. Comparison of tmRNA sequences from a larger collection of lactococcal strains will allow us to confirm this finding.

#### Phylogenetic analysis of *ssrA* genes from gram-positive bacteria

We PCR-amplified and sequenced the internal part of the *ssrA* gene of 24 strains of Gram-positive bacteria with low G+C content, namely of the genera *Bacillus*, *Lactococcus*, *Lactobacillus*, *Streptococcus*, *Staphylococcus*, *Leuconostoc*, *Listeria* and *Enterococcus*. The divergence of tmRNA sequences within one genus differed according to the species. For example, we found 5 base differences between *ssrA* genes of *Listeria innocua* and *Listeria monocytogenes* (1.3% of divergence). The 16S rRNA sequences of these species are less divergent (0.5%). In staphylococci, *S. saprophyticus* tmRNA differs from *S. xylosum* in only one base (0.3% of divergence). In contrast, the difference between these two species and *S. epidermidis* is more marked (more than 20% divergence). The divergence between species within the genera *Lactococcus*, *Lactobacillus*, *Leuconostoc* and *Enterococcus* is 8.9%, 2.9%, 18% and 6.6%, respectively. Sequence comparisons showed that in some cases, as for *Listeria innocua* and *Listeria monocytogenes*, the tmRNAs are more divergent than 16S rRNA, thus making tmRNA a promising tool for species identification. Although the total number of base differences even in a less divergent 16S rRNA sequence might be higher or at least equal to that of the corresponding tmRNA sequence, the advantage with the latter is that only about 350 bases have to be sequenced compared to 1,500 bases for the 16S rRNA sequence.

**Table 2: Bacterial strains**

Bacteria	Strain name (name of other collection) [accession number of corresponding <i>ssrA</i> gene nucleotide sequence]	Nucleotides in variable positions (156, 208 and 235) of the <i>ssrA</i> gene of <i>L. lactis</i>
<i>Lactococcus lactis</i> ssp. <i>lactis</i>	IL2961 (NCDO2091) [AF375554]	AGT
	IL2962 (NCDO2110) [AF375555]	AGC
	IL2965 (NCDO2118) [AF375552]	AGC
	IL638 [AF375557]	AGC
<i>Lactococcus lactis</i> ssp. <i>lactis</i> biovar. <i>diacetylactis</i>	CNRZ337 [AF375561]	AGC
	IL890 [AF375558]	AGC
	IL986 [AF375562]	TGC
	IL1403* [AF375553]	TGC
	CNRZ124 [AF375566]	TGC
<i>Lactococcus lactis</i> ssp. <i>cremoris</i>	CNRZ188 [AF375565]	TGC
	IL582** [AF375556]	AAT
	IL960** [AF375560]	AAT
	CNRZ112 [AF375563]	AAT
	CNRZ119 (ATCC19257) [AF375564]	AAT
<i>Lactococcus plantarum</i> <i>Lactococcus raffinolactis</i> <i>Lactococcus garvieae</i> <i>Streptococcus thermophilus</i> <i>Leuconostoc lactis</i> <i>Leuconostoc pseudomesenteroides</i> <i>Leuconostoc mesenteroides</i> ssp. <i>cremoris</i> <i>Leuconostoc mesenteroides</i> ssp. <i>mesenteroides</i> <i>Leuconostoc mesenteroides</i> ssp. <i>dextranum</i> <i>Lactobacillus helveticus</i> <i>Lactobacillus plantarum</i> <i>Lactobacillus gallinarum</i> <i>Enterococcus faecalis</i> <i>Enterococcus faecium</i> <i>Enterococcus durans</i> <i>Listeria innocua</i> <i>Listeria monocytogenes</i> <i>Staphylococcus saprophyticus</i> <i>Staphylococcus epidermidis</i> <i>Staphylococcus xylosus</i> <i>Bacillus subtilis</i> <i>Escherichia coli</i> K-12	CNRZ355 [AF375559]	AAT
	CNRZ1322 (ATCC43199) [AF375567]	
	CNRZ1214 [AF375578]	
	CNRZ1323 [AF375579]	
	CNRZ1358 (ATCC19258) [AF375568]	
	CIP102422 (ATCC19256) [AF375569]	
	CIP103316 (ATCC12291) [AF375570]	
	CNRZ361 (ATCC19254) [AF375571]	
	CNRZ1022 [AF375572],	
	CNRZ749 (ATCC8293) [AF375573]	
	CNRZ77 (ATCC19255) [AF375574]	
	CNRZ223 (ATCC15009) [AF375575]	
	CNRZ211 (ATCC14917) [AF375576]	
CNRZ1931 (ATCC33199, CIP103611) [AF375577]		
CNRZ1666 (ATCC19433) [AF375580]		
LMG11423 [AF3755781]		
CNRZ129 (ATCC19432) [AF375582]		
CLIP8811 (ATCC33090) [AF375583]		
ATCC15313 [AF375584]		
ADN12 [AF375585]		
DSM20044 [AF375586]		
DSM20266 [AF375587]		
168 [AF375588]		
W3110; W3110 $\Delta$ <i>ssrA</i>		

\*Strain IL1403 does not produce diacetyl as it was cured of plasmids [38]. However, the parental strain CNRZ157 (IL594) was identified as biovar. *diacetylactis*, since it produces 7.4 mg/l of diacetyl (Tremblay J, Tailliez P, unpublished). Therefore we consider IL1403 as biovar. *diacetylactis*. \*\* These strains exhibit ssp. *lactis* phenotype (Tremblay J, Tailliez P, unpublished).

For reconstruction of a tmRNA-based phylogenetic tree, we aligned our sequences to other available *ssrA* sequences [16,17]. Depending on the treeing method and whether a filter was used or not, the resulting trees differed in the branching order of particular clusters, although the clusters themselves remained stable (data not shown). This finding is reflected in the multifurcations

drawn in the consensus tree (Fig. 2). A stable branching order could not be maintained indicating that the resolution of tmRNA might be restricted to subspecies, species or genus level due to high variability. This was also evident when calculating the 50% conservation filter that left only 180 bases for further analyses. For a thorough phylogenetic study above the level of intraspecies or in-

trageneric relationships, the tmRNA sequences lack sufficiently high numbers of more conservative positions as one of the prerequisites for phylogenetic markers [24]. However, at the level of genus, species and subspecies they might be an alternative to rRNA sequences that are too conserved for a proper resolution at that level.

The presence of conserved ends on the DNA sequence facilitated the design of universal primers for PCR amplification of the near full-size *ssrA* gene of numerous Gram-positive bacteria. The small size of the molecule is an attractive characteristic since it enabled using the same two primers for sequence determination. The use of PCR amplification and sequencing of tmRNA genes was also demonstrated for other groups of bacteria [10,25]. Based on the above analyses we propose that tmRNA sequences can be used for identification of Gram-positive bacteria on the species and genus level. For some bacteria, e.g., lactococci, differences in tmRNA sequences make strain identification possible on the subspecies level, especially if sensitive techniques such as DGGE or TGGE are used [26].

#### **FISH with the tmRNA targeted probes**

*E. coli* W3110 and its  $\Delta$ *ssrA* derivative were used to test whether it is possible to specifically visualize bacteria by means of FISH with tmRNA targeted probes. Because of relatively low tmRNA molecule numbers per cell (estimated at ~1,000; [11]) HRP-tyramide signal amplification system was applied [27]. We were able to visualize strain W3110 with the tmRNA targeted HRP-labeled probe (Fig. 4, b). The signal was specific, since the  $\Delta$ *ssrA* strain did not give any signal with the same probe (Fig. 4, d). These results demonstrate that tmRNA, fluorescently labeled after HRP-tyramide signal amplification can be used to distinguish *E. coli* strains expressing or not the *ssrA* gene. The ability to visualize bacterial cells also indicates that despite its small size the tmRNA molecule was not totally washed out of the cell during FISH procedure. Using a less sensitive technique with fluorescein labeled probes (E1 – E5, Table 1) we detected a signal only with the strain W3110  $\Delta$ *ssrA* carrying the *ssrA* gene on plasmid p10SA, but not with the wild type strain. However, no signal was obtained with wild type strain W3110, even if using all five probes simultaneously.

The low efficiency of fluorescein labeled probes may be due to low copy number or poor accessibility of target RNA. The probes used in our study were targeted to regions with different degree of accessibility [28]. However, using these probes for FISH with the plasmid carrying strain, we did not observe differences in signal intensity (data not shown). It is likely that the tmRNA copy number per cell is too low to be detected by FISH using

fluorescein labeled probes, which may restrict its use as a target molecule.

Besides rRNA and regulatory RNAII of ColE1-related plasmids, tmRNAs are the only molecules in bacteria that have been thus far detected by FISH with fluorophore- or HRP-labeled oligonucleotide probes [29]. All three types of molecules are non-translated RNAs. Labeling of specific mRNA with FISH did not give any signal in similar conditions despite strong expression of the selected gene (our unpublished results). mRNA was visualized by FISH only with longer, digoxigenin labeled transcript probes followed by antibody detection [30–32]. Poor performance of oligonucleotide probes in detection of mRNA may be attributed to involvement of mRNA in the translation process.

#### **Conclusions**

We determined the sequences of tmRNA genes in numerous Gram-positive bacteria. The presence of conservative regions at extremities of tmRNA genes that flank divergent sequences and the possibility to detect tmRNA by FISH makes this molecule a potential tool for identification of bacteria.

#### **Materials and methods**

##### **Strains, media and general methods**

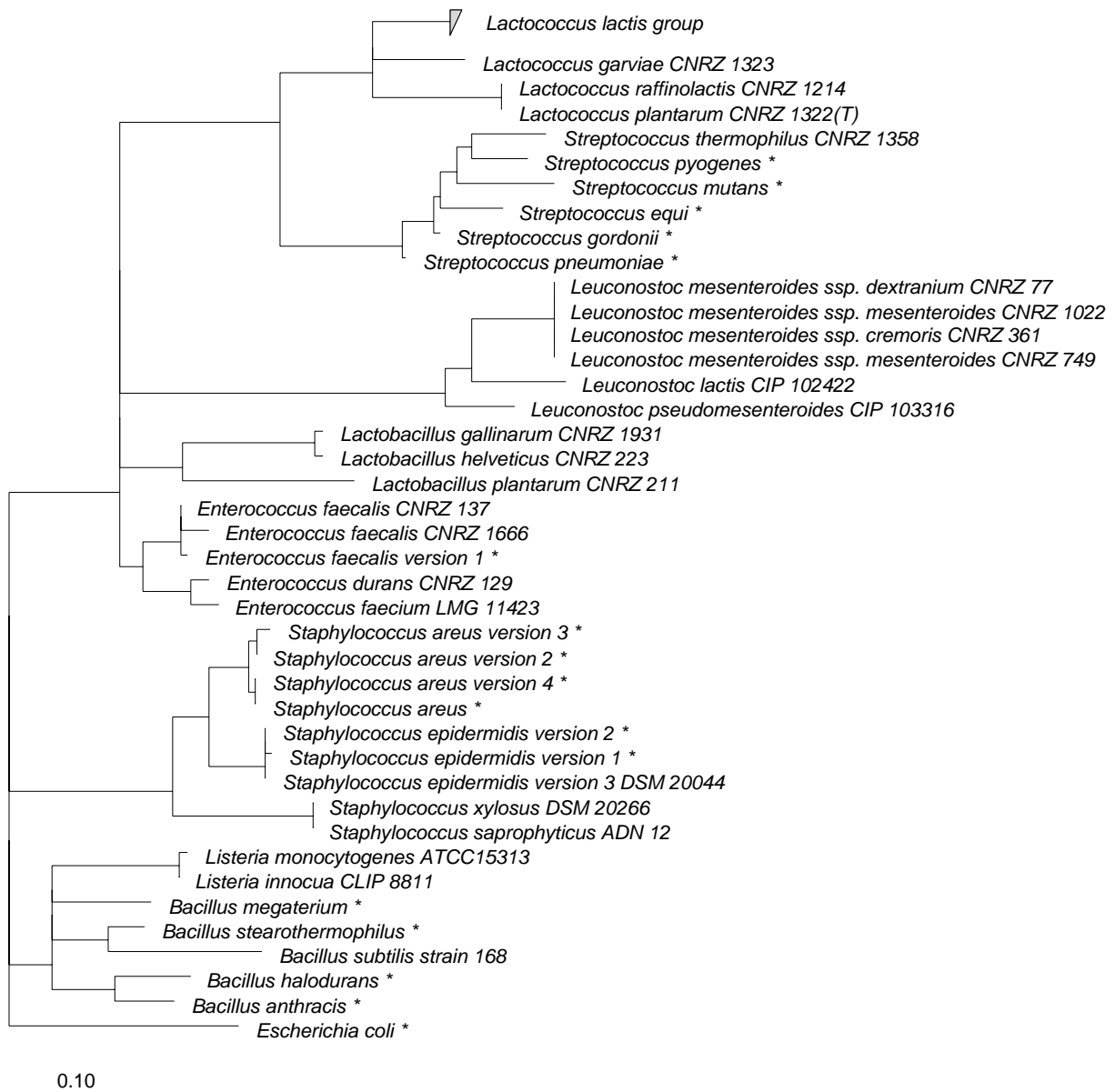
The bacterial strains used in this study are listed in Table 2. *E. coli* and *B. subtilis* were grown on L-Broth and other bacteria on BHI broth (Difco, Detroit, Mich.). Solid medium contained 1.5% Bacto-Agar (Difco, Detroit, MI). Standard procedures were used for DNA preparation, restriction endonuclease digestion and DNA electrophoresis [33]. Plasmid p10SA, encoding the *ssrA* gene of *E. coli*, and strain W3110 $\Delta$ *ssrA* were kindly provided by Dr. H. Inokuchi [12]. *B. subtilis* strain 168 is from the collection of Dr. C. Anagnostopoulos [34]. Chromosomal DNA of staphylococci was obtained from M. C. Montel (France). Other strains are from the CNRZ collection (INRA, Jouy-en-Josas, France). The *Lactococcus lactis* ssp. *lactis* strains were considered belonging to biovariety *diacetylactis* if they produced more than 4 mg/l diacetyl (P. Tailliez and J. Tremblay, unpublished).

##### **Oligonucleotide probes**

The nucleotide sequences of probes are listed in Table 1. These probes were labeled with either fluorescein (F-) or horseradish peroxidase (HRP-). Fluorescent and non-labeled probes were purchased from Eurobio (Les Ulis, France). The probes were labeled with horseradish peroxidase as described before [27].

##### **DNA sequence analysis**

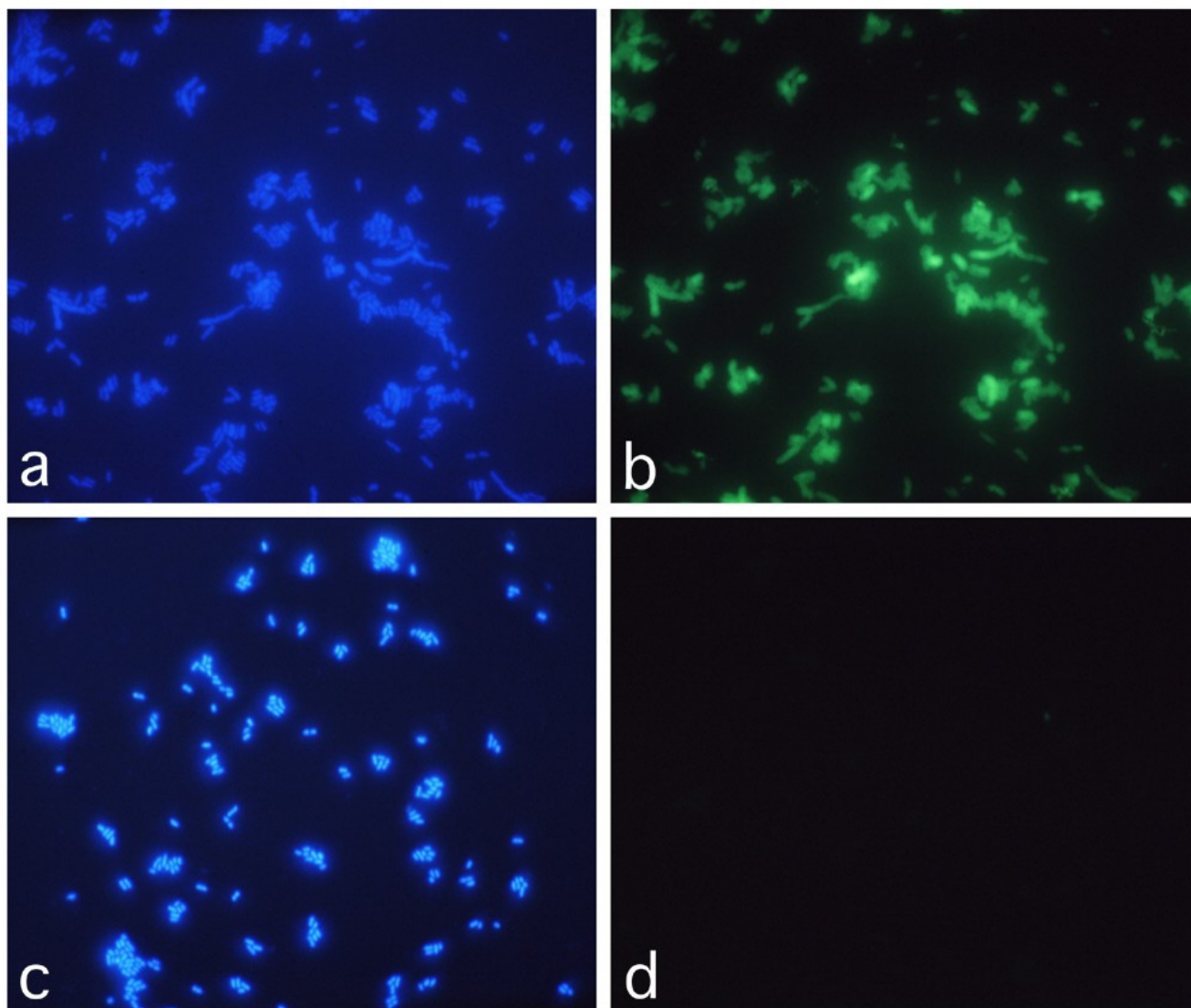
To obtain DNA fragments carrying the *ssrA* gene coding for tmRNA we used PCR amplification. Reactions (94°C

**Figure 2**

Consensus tree based on tmRNA sequences determined in this study. For details on the *Lactococcus lactis* group see Table 2. The sequence of *E. coli* was used for setting the root. The bar represents 10% estimated sequence divergence. \*Sequences of bacteria presented without a strain number were taken from the tmRNA databases (references 16, 17).

for 5 min., 50°C for 1 min., 72°C for 7 min., 30 cycles) were performed on Perkin Elmer GeneAmp System 2400 (Perkin Elmer, Norwalk, CT) with Taq DNA polymerase (Promega, Madison, WI). We used primers 11L and 12L for PCR amplification of the internal part of *ssrA* gene of 37 strains of Gram-positive bacteria with low G+C content, of the genera *Lactococcus*, *Lactobacillus*, *Streptococcus*, *Staphylococcus*, *Leuconostoc*, *Liste-*

*ria* and *Enterococcus*. To obtain the PCR product of corresponding size for strains *L. gallinarum* CNRZ1931, *L. plantarum* CNRZ211 and *S. xylosus* DSM20266, we had to lower the stringency of PCR (annealing temperature 30°C instead of 50°C), which may indicate that the primers were not fully complementary to target sequences. PCR products were run on agarose gel, the fragment of corresponding size was cut from the gel, purified using



**Figure 3**

Epifluorescence micrographs of *E. coli* cells, hybridized with HRP-labeled tmRNA targeted probe (called RNA1) and colored with DAPI; without filter for excitation light (a, c); with a filter for fluorescein (DAPI staining excluded, b, d); W3110 cells (a, b), W3110  $\Delta$ ssrA (c, d).

Gene Clean kit (Bio101, Vista, CA) and sequenced using DNA sequencing kit (PE Applied Biosystems, Warrington, UK) using the same primers. DNA sequences were analyzed with Staden sequence analysis package [35].

For a phylogenetic study, the new tmRNA sequences [16,36] were aligned on the basis of the published alignment [36] with the aid of the ARB software package [<http://www.mikro.biologie.tu-muenchen.de/pub/ARB/>] that was used as well for the following analyses. A 50% conservation filter was calculated to exclude the most variable positions [24]. Three different treeing methods,

namely maximum likelihood, maximum parsimony and distance matrix were applied. For the latter method only the part of the sequences common to all was used, since it was sensitive to different sequence lengths. Finally, a consensus tree was drawn based on the maximum likelihood tree [24].

#### **DNA sequence accession numbers**

Sequences of the tmRNA gene fragment that was amplified using primers 11L and 12L, are available in GenBank (see accession numbers in Table 2). The sequence of primers is not included in the sequences.

### FISH techniques

Cell samples were fixed with paraformaldehyde, hybridized with either the fluorescent probes or with horseradish peroxidase (HRP) labeled probes with subsequent fluorophore-tyramide (NEN Life Science Products, Boston, MA) coloration as described [27,37]. 4',6-diamino-2-phenylindole (DAPI, Sigma, St. Louis, MO, 2.5 µg/ml) was added directly to the glycerol/PBS mountant to visualize all bacteria (Citifluor Ltd., Canterbury, UK). Photographs were taken using an epifluorescence microscope, equipped with a three-band filter set for emission light (Nikon, Tokyo, Japan), using Sensia 400 film (Fuji, Tokyo, Japan). Slides were scanned and processed with Adobe Illustrator 7.0 program (Edinburgh, Scotland).

### Acknowledgments

We thank A. Gruss for critical reading of the manuscript, P. Tailliez, P. Renault, A. Sorokin and S. D. Ehrlich for stimulating discussions, H. Inokuchi for the gift of strain and plasmid, P. Regent and B. Nicolas for photo-work.

### References

- Amann R, Ludwig W: **Ribosomal RNA-targeted nucleic acid probes for studies in microbial ecology.** *FEMS Microbiol Rev.* 2000, **24**:555-565
- Amann RI, Ludwig W, Schleifer K-H: **Phylogenetic identification and in situ detection of individual microbial cells without cultivation.** *Microbiol Rev.* 1995, **59**:143-169
- Amann R, Glöckner F-O, Neef A: **Modern methods in subsurface microbiology: in situ identification of microorganisms with nucleic acid probes.** *FEMS Microbiol Rev.* 1997, **20**:191-200
- Ludwig W, Schleifer K-H: **Phylogeny of bacteria beyond the 16S rRNA standard.** *ASM News.* 1999, **65**:752-757
- Woese CR: **Bacterial evolution.** *Microbiol Rev.* 1987, **51**:221-271
- Maidak BL, Cole JR, Lilburn TG, Parker CT, Saxman PR, Stredwick JM, Garrity GM, Li B, Olsen GJ, Pramanik S, Schmidt TM, Tiedje JM: **The RDP (Ribosomal Database Project) continues.** *Nucleic Acids Res.* 2000, **28**:173-174
- Fuchs BM, Wallner G, Beisker W, Schwippel I, Ludwig W, Amann R: **Flow cytometric analysis of the in situ accessibility of Escherichia coli 16S rRNA for fluorescently labeled oligonucleotide probes.** *Appl Environ Microbiol.* 1998, **64**:4973-4982
- Fuchs BM, Glöckner FO, Wulf J, Amann R: **Unlabeled helper oligonucleotides increase the in situ accessibility to 16S rRNA of fluorescently labeled oligonucleotide probes.** *Appl Environ Microbiol.* 2000, **66**:3603-3607
- Chauhan AK, Apirion D: **The gene for a small stable RNA (10Sa RNA) of Escherichia coli.** *Mol Microbiol.* 1989, **3**:1481-1485
- Felden B, Gesteland RF, Atkins JF: **Eubacterial tmRNAs: everywhere except the alpha-proteobacteria?** *Biochim Biophys Acta* 1999, **1446**:145-148
- Lee SY, Baily SC, Apirion D: **Small stable RNA from Escherichia coli: evidence for the existence of new molecules and for a new ribonucleoprotein particle containing 6S RNA.** *J Bacteriol.* 1978, **133**:1015-1023
- Komine Y, Kitabatake M, Yokogawa T, Nishikawa K, Inokuchi H: **A tRNA-like structure is present in 10Sa RNA, a small stable RNA from Escherichia coli.** *Proc Natl Acad Sci U S A* 1994, **91**:9223-9227
- Ushida C, Himeno H, Watanabe T, Muto A: **tRNA-like structures in 10Sa RNAs of Mycoplasma capricolum and Bacillus subtilis.** *Nucleic Acids Res.* 1994, **22**:3392-3396
- Williams KP, Martindale KA, Bartel DP: **Resuming translation on tmRNA: a unique mode of determining a reading frame.** *EMBO J.* 1999, **18**:5423-5433
- Keiler KC, Waller PR, Sauer RT: **Role of a peptide tagging system in degradation of proteins synthesized from damaged messenger RNA.** *Science* 1996, **271**:990-993
- Williams KP: **The tmRNA website.** *Nucleic Acids Res.* 2000, **28**:168
- Knudsen B, Wower J, Zwieb C, Gorodkin J: **tmRDB (tmRNA database).** *Nucleic Acids Res.* 2001, **29**:171-172
- Keiler KC, Shapiro L, Williams KP: **tmRNAs that encode proteolysis-inducing tags are found in all known bacterial genomes: A two-piece tmRNA functions in Caulobacter.** *Proc Natl Acad Sci U S A* 2000, **97**:7778-7783
- Triglia T, Peterson MG, Kemp DJ: **A procedure for in vitro amplification of DNA segments that lie outside the boundaries of known sequences.** *Nucleic Acids Res.* 1988, **16**:8186
- Tailliez P, Tremblay J, Ehrlich SD, Chopin A: **Molecular diversity and relationship within Lactococcus lactis, as revealed by randomly amplified polymorphic DNA (RAPD).** *Syst Appl Microbiol.* 1998, **21**:530-538
- Kempler GM, McKay LL: **Characterization of plasmid deoxyribonucleic acid in Streptococcus lactis subsp. diacetylactis: evidence for plasmid-linked citrate utilization.** *Appl Environ Microbiol.* 1979, **37**:316-323
- Sesma F, Gardiol D, de Ruiz Holgado AP, de Mendoza D: **Cloning of the citrate permease gene of Lactococcus lactis subsp. lactis biovar diacetylactis and expression in Escherichia coli.** *Appl Environ Microbiol.* 1990, **56**:2099-2103
- Beimfohr CW, Ludwig W, Schleifer K-H: **Rapid genotypic differentiation of Lactococcus lactis subspecies and biovar.** *System Appl Microbiol.* 1997, **20**:216-221
- Ludwig W, Strunk O, Klugbauer S, Klugbauer N, Weizenegger M, Neumaier J, Bachleitner M, Schleifer K-H: **Bacterial phylogeny based on comparative sequence analysis.** *Electrophoresis.* 1998, **19**:554-568
- Williams KP, Bartel DP: **Phylogenetic analysis of tmRNA secondary structure.** *RNA* 1996, **2**:1306-1310
- Muyzer G: **DGGE/TGGE a method for identifying genes from natural ecosystems.** *Curr Opin Microbiol.* 1999, **2**:317-322
- Schönhuber W, Fuchs B, Juretschko S, Amann R: **Improved sensitivity of whole-cell hybridization by the combination of horseradish peroxidase-labeled oligonucleotides and tyramide signal amplification.** *Appl Environ Microbiol.* 1997, **63**:3268-3273
- Matveeva O, Felden B, Audlin S, Gesteland RF, Atkins JF: **A rapid in vitro method for obtaining RNA accessibility patterns for complementary DNA probes: correlation with an intracellular pattern and known RNA structures.** *Nucleic Acids Res.* 1997, **25**:5010-5016
- Juretschko S, Schönhuber W, Kulakauskas S, Ehrlich DS, Schleifer K-H, Amann R: **In situ detection of Escherichia coli cells containing ColEI-related plasmids by hybridization to regulatory RNA II.** *Syst Appl Microbiol.* 1999, **22**:1-8
- Hahn D, Amann RI, Zeyer J: **Detection of mRNA in Streptomyces cells by whole-cell hybridization with digoxigenin-labeled probes.** *Appl Environ Microbiol.* 1993, **59**:2753-2757
- Hönerlage W, Hahn D, Zeyer J: **Detection of mRNA of nprM in Bacillus megaterium ATCC 14581 grown in soil by whole-cell hybridization.** *Arch Microbiol.* 1995, **163**:235-241
- Wagner M, Schmid M, Juretschko S, Trebesius K-H, Bubert A, Goebel W, Schleifer K-H: **In situ detection of a virulence factor mRNA and 16S rRNA in Listeria monocytogenes.** *FEMS Microbiol Lett.* 1998, **160**:159-168
- Sambrook J, Fritsch EF, Maniatis T: **Molecular cloning: a laboratory manual.** 2nd ed. Cold Spring Harbor Laboratory Press. Cold Spring Harbor, N.Y. 1989
- Anagnostopoulos C, Spizizen J: **Requirements for transformation in Bacillus subtilis.** *J Bacteriol.* 1961, **81**:741-746
- Staden R: **The Staden sequence analysis package.** *Mol Biotechnol.* 1996, **5**:233-241
- Zwieb C, Wower I, Wower J: **Comparative sequence analysis of tmRNA.** *Nucleic Acids Res.* 1999, **27**:2063-2071
- Amann RI: **In situ identification of microorganisms by whole cell hybridization with rRNA-targeted nucleic acid probes.** In: *Molecular microbial ecology manual* (Edited by Akkerman ADL, van Elsas JD and de Bruijn FJ), Dordrecht, The Netherlands, Kluwer Academic Publishers 1995:1-15
- Chopin M-C, Moillo-Batt A, Rouault A: **Plasmid-mediated UV protection in Streptococcus lactis.** *FEMS Microbiol Lett.* 1985, **26**:243-245